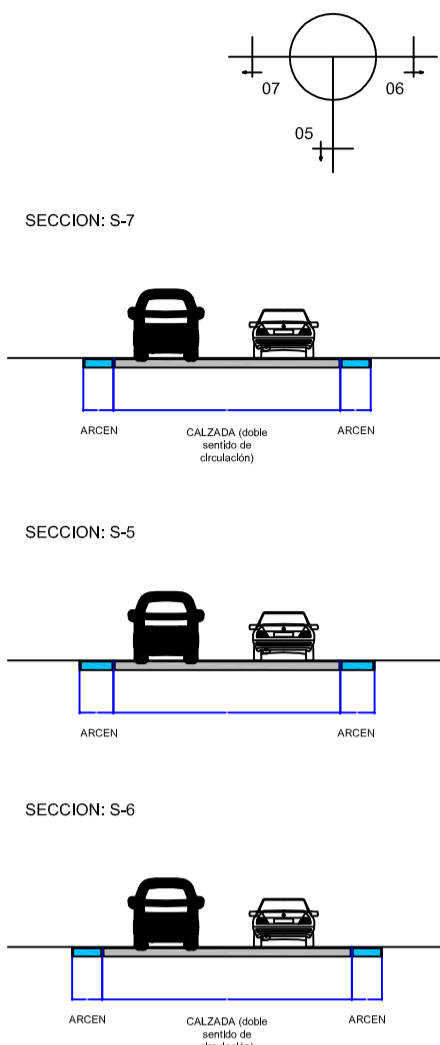
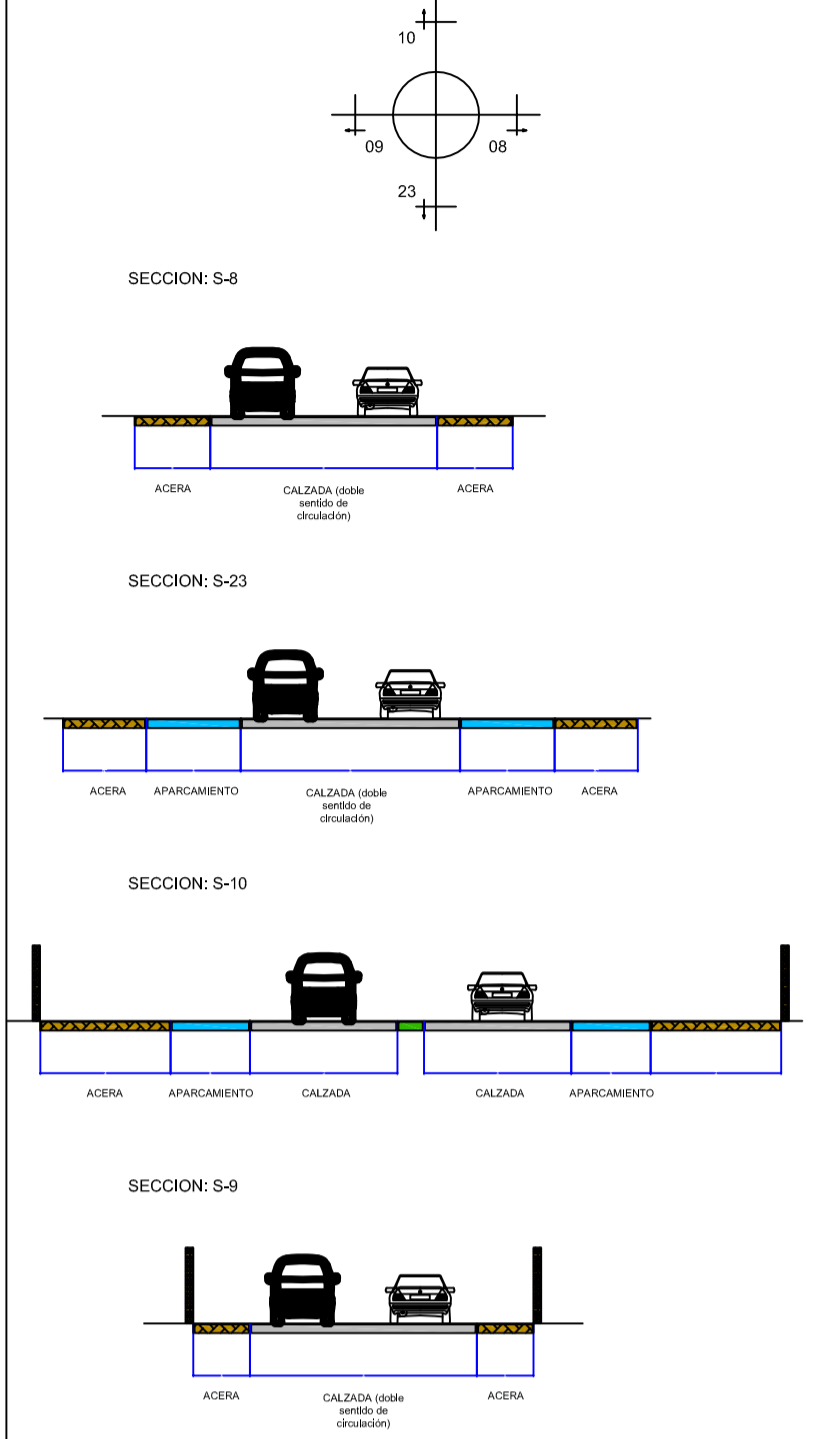


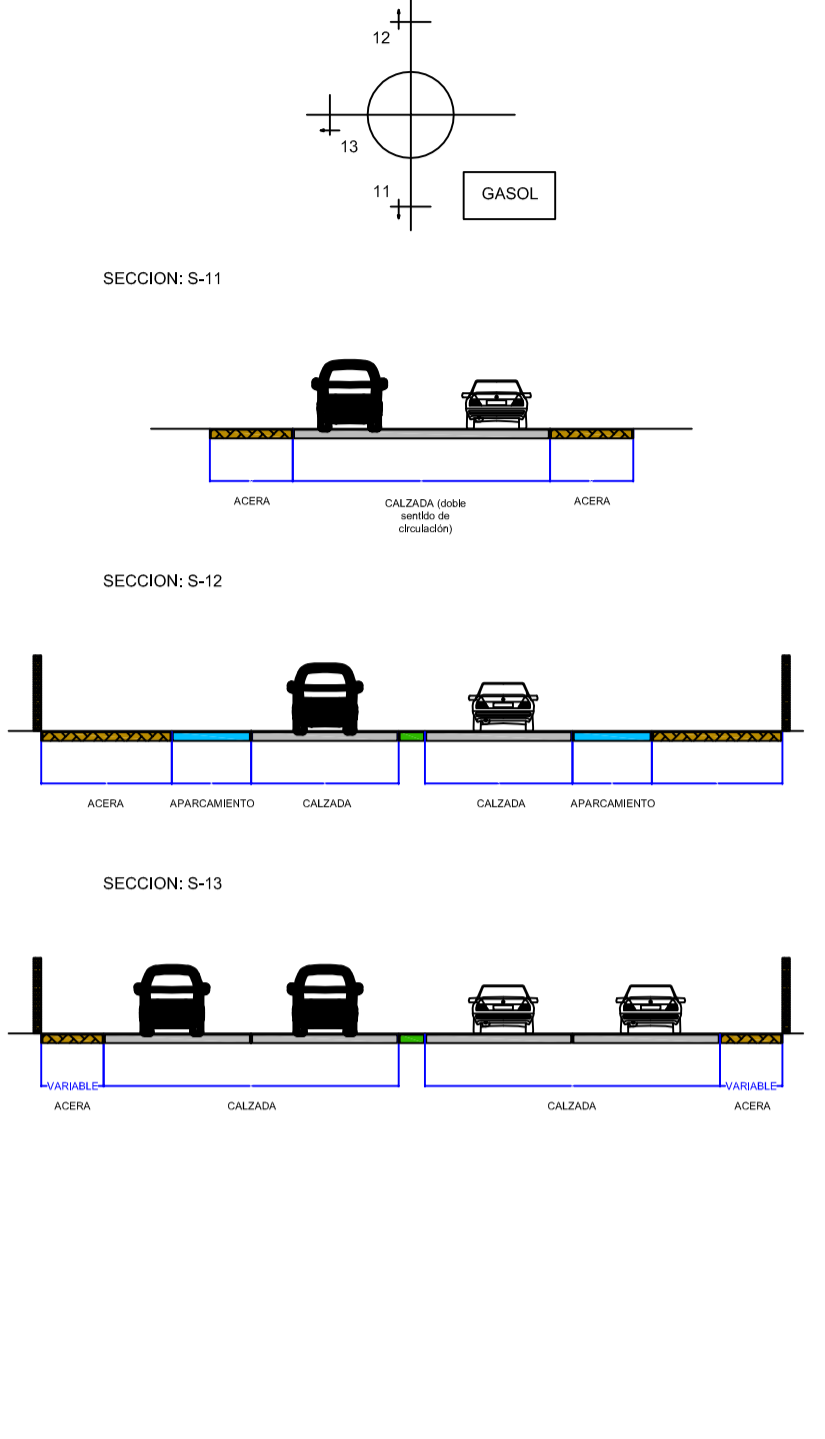
GLORIETA 1



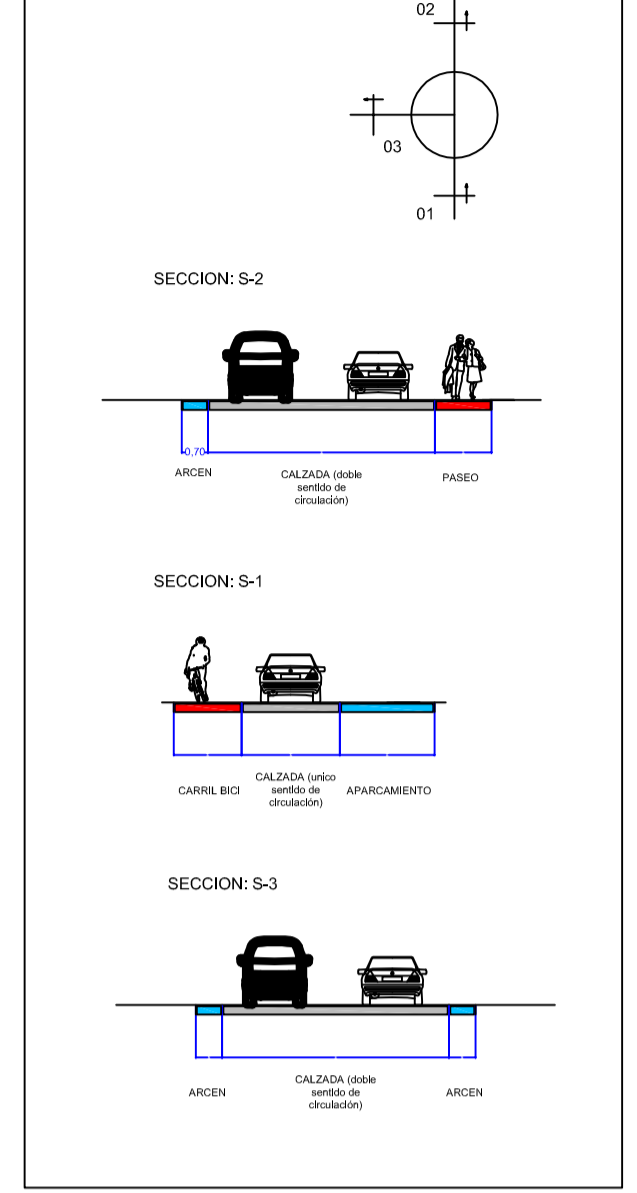
GLORIETA 2



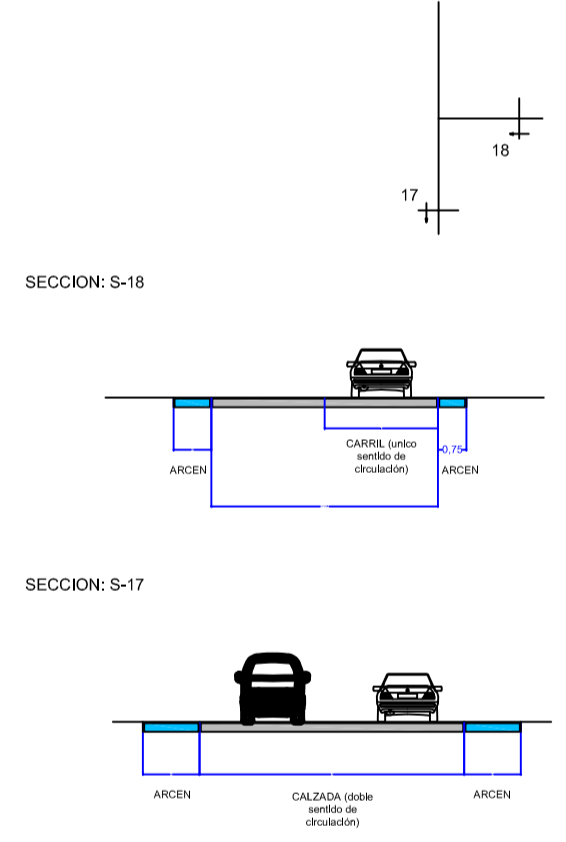
GLORIETA 3



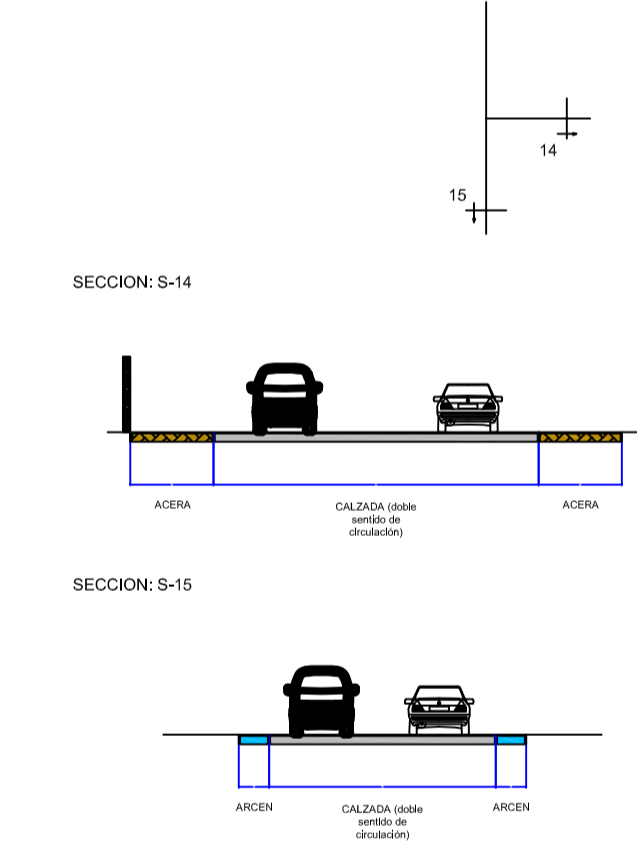
GLORIETA 4



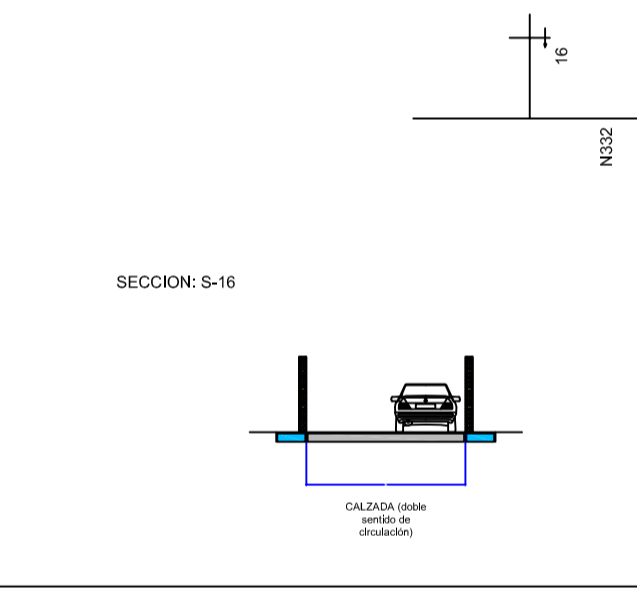
INTERSECC 1 - ALGAR



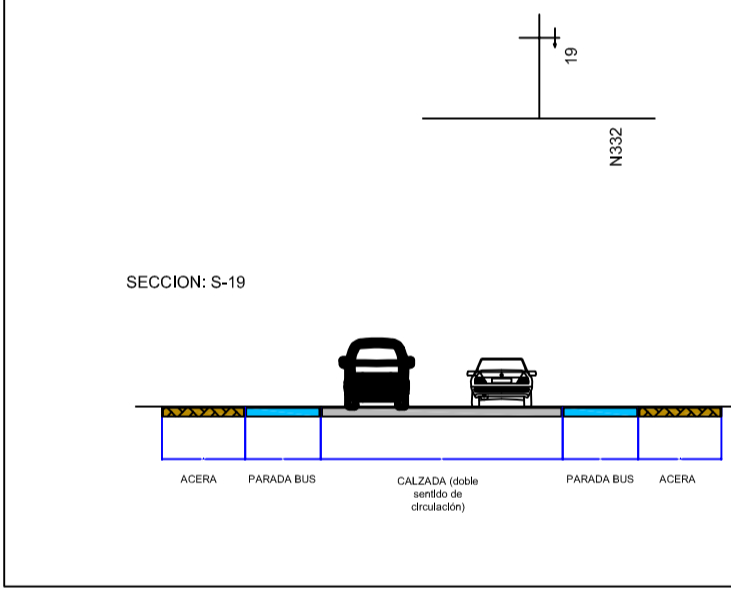
INTERSECC 2 - ALTEA LA VELLA



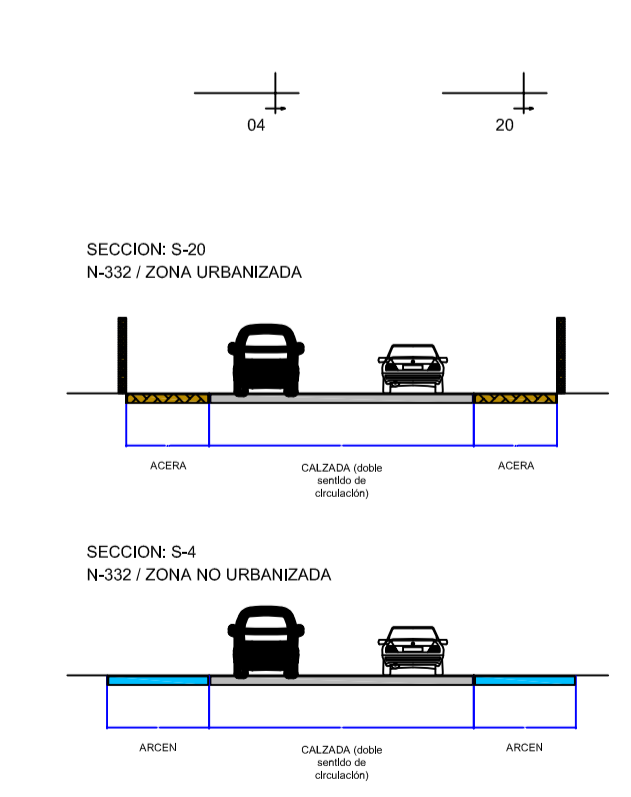
INTERSECC 3 - CAP NEGRE



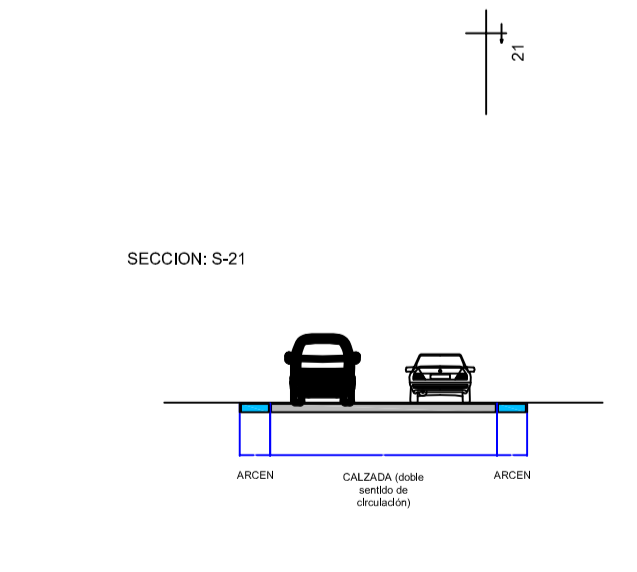
INTERSECC 4 - GARGANES



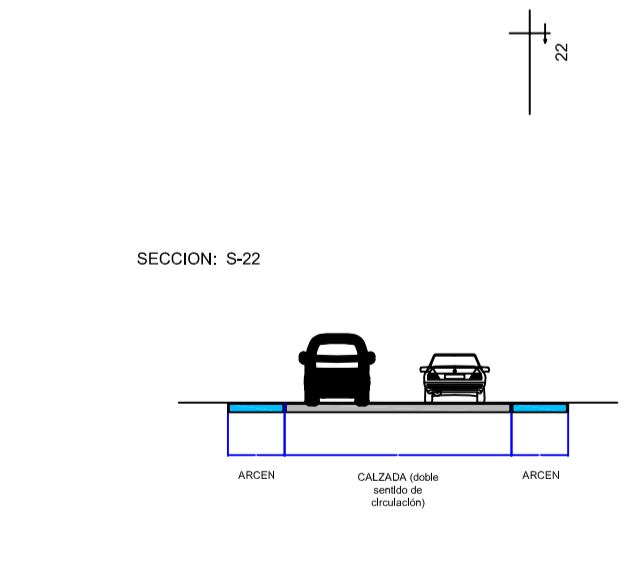
N-332



CV-755



CV-760




Ajuntament d'Altea

PLAN GENERAL ALTEA
versión preliminar



DILIGENCIA: En sesión Plenaria de 08/08/2018, el Ayuntamiento de ALTEA acordó someter el presente plano a participación pública y consulta durante un plazo de 45 días. El Secretario.

JUNIO 2018

Plano de:

**SECCIONES TIPO
PLANO DE SECCIONES**

Arquitectos:
Rosario Berjon Ayuso Ana Beltri Izquierdo

Redactor estudio:
[Signature]
Fº Javier Cuenca Pérez

Escala
1/20.000
Nº de Plano
5 H2